

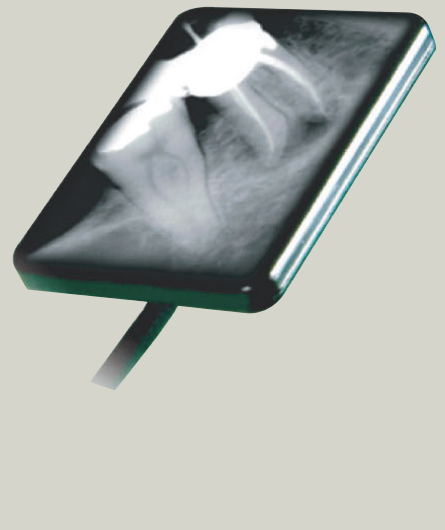


# Wireless Portable X-Ray **DÍOX**



Anytime...

Anyplace...



Compact size and light weight

Excellent image quality

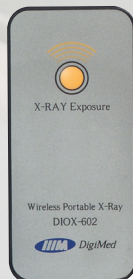
Wireless remote controller for X-ray exposure



[www.digimed.co.kr](http://www.digimed.co.kr)

## Total weight 1.8Kg, 2mA X-ray tube current

- Wide graphic LCD.
- Highest quality image and lowest patient dosage.
- High frequency operated constant potential X-ray generator.
- Pre-programmed quick setting makes the operation fast and easy.
  - Safe and powerful Li-Polymer rechargeable battery with PCM.
  - Overlapped internal radiation shield is specially designed to protect the operator from radiation.
  - Mobile stand, wall mount stand.



### Specification

X-Ray Generator	DC High Frequency	DIOX-602
X-Ray Installation	Tube Valtage	60kV
	Tube Current	2mA
X-Ray Tube	Anode Type	Stationary
	Anode Angle	20°
	Focal Spot	0.8mm
	Heat Capacity	8.5KHU
Exposure time Set	0.01~1.60sec(0.01Sec step)	
Total Filtration	1.6mm Al	
SSD	200mm(Long cone)	
Total Weight	1.8Kg	
Dimension	135(W) x 150(D) x 175(H)mm	
	Battery	DC 24V
Power requirement	Battery Charger	AC100~240V

Manufacture



#311, ACE HIGH-END TOWER 3, 371-50,  
Gasam-Dong, Geumcheon-Gu, Seoul, Korea  
Tel.: 82-2-2624-1551 Fax.: 82-2-2624-1553  
<http://www.digimed.co.kr>  
E-mail : [digi-med@hanmail.net](mailto:digi-med@hanmail.net)

Distributed by

